

# Heavy Wall Tubing

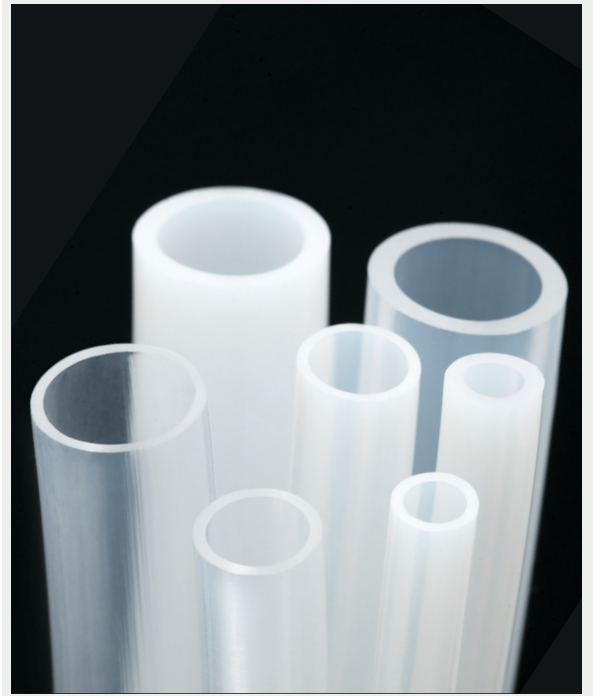
PTFE, FEP, PFA, and ETFE Tubing

## Overview-

As the world's leader in polymer extrusions, Zeus provides advanced extruded tubing for various industries, including medical, aerospace, electrical, fiber optics, oil and gas, and more. From lubricity and flexibility to mechanical strength, chemical resistance, and more, our tubing products are an ideal choice for a wide variety of applications.

Zeus offers standard heavy wall sizing in various high-performance resins, including PTFE, FEP, PFA, and ETFE. Our heavy wall tubing products are available in a range of sizes and wall thicknesses to meet the needs of multiple industry applications.

Our heavy wall tubing is supplied in natural color unless otherwise specified. Custom colors are available on request. UL-224 and/or CAN/CSA product is also available upon request.



*Request a sample of our heavy wall tubing by contacting a sales representative today.*

## APPLICATIONS

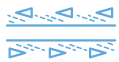
- Aerospace
- Energy
- Oil & Gas
- Fiber Optics
- Fluid Management
- Medical

## CAPABILITIES AND SIZING

- Available resins include: PTFE, FEP, PFA, and ETFE
- AWG size 5 to 24
- Fractional sizes specified by 5/32" ID
- Custom sizes and tolerances

## KEY PROPERTIES

- Resin-dependent temperatures up to 500 °F / 260 °C
- Chemical resistance
- Lubricity, optical clarity, and flexibility vary, depending on resin



COEFFICIENT OF FRICTION



CHEMICAL RESISTANCE



CONTINUOUS SERVICE TEMP



# Heavy Wall Tubing

DIMENSIONS (INCHES)					
AWG	INSIDE DIAMETER			WALL DIMENSIONS	
	MIN.	NOM.	MAX.	NOM.	TOL.
24	0.020	0.022	0.026	0.016	±0.003
23	0.024	0.027	0.030	0.016	±0.003
22	0.025	0.029	0.032	0.016	±0.003
21	0.030	0.033	0.036	0.016	±0.003
20	0.032	0.036	0.040	0.018	±0.003
19	0.036	0.040	0.044	0.020	±0.004
18	0.040	0.045	0.049	0.020	±0.004
17	0.045	0.050	0.054	0.020	±0.004
16	0.051	0.056	0.061	0.020	±0.004
15	0.057	0.062	0.067	0.020	±0.004
14	0.064	0.069	0.074	0.020	±0.004
13	0.072	0.077	0.082	0.020	±0.004
12	0.081	0.086	0.091	0.020	±0.004
11	0.091	0.096	0.101	0.020	±0.004
10	0.102	0.107	0.112	0.025	±0.005
9	0.114	0.119	0.124	0.025	±0.005
8	0.129	0.135	0.141	0.030	±0.005
7	0.144	0.151	0.158	0.030	±0.005
6	0.162	0.170	0.178	0.030	±0.005
5	0.182	0.190	0.198	0.032	±0.005

DIMENSIONS (mm)					
AWG	INSIDE DIAMETER			WALL DIMENSIONS	
	MIN.	NOM.	MAX.	NOM.	TOL.
24	0.51	0.56	0.66	0.41	±0.08
23	0.61	0.69	0.76	0.41	±0.08
22	0.64	0.72	0.81	0.41	±0.08
21	0.76	0.84	0.91	0.41	±0.08
20	0.81	0.91	1.02	0.46	±0.08
19	0.91	1.02	1.12	0.51	±0.10
18	1.02	1.14	1.24	0.51	±0.10
17	1.14	1.27	1.37	0.51	±0.10
16	1.30	1.42	1.55	0.51	±0.10
15	1.45	1.57	1.70	0.51	±0.10
14	1.63	1.75	1.88	0.51	±0.10
13	1.83	1.96	2.08	0.51	±0.10
12	2.06	2.18	2.31	0.51	±0.10
11	2.31	2.44	2.57	0.51	±0.10
10	2.59	2.72	2.84	0.64	±0.13
9	2.90	3.02	3.15	0.64	±0.13
8	3.28	3.43	3.58	0.76	±0.13
7	3.66	3.84	4.01	0.76	±0.13
6	4.11	4.32	4.52	0.76	±0.13
5	4.62	4.83	5.03	0.81	±0.13

DIMENSIONS (INCHES)			
FRACTIONAL SIZE (ID/OD)	OUTSIDE DIAMETER (OD) in.	INSIDE DIAMETER (ID) in.	NOMINAL WALL THICKNESS in.
5/32*	0.250 ± 0.005	0.156 ± 0.005	0.047

DIMENSIONS (mm)			
FRACTIONAL SIZE (ID/OD)	OUTSIDE DIAMETER (OD) mm	INSIDE DIAMETER (ID) mm	NOMINAL WALL THICKNESS mm
5/32*	6.35 ± 0.13	3.96 ± 0.13	1.19

\* This product is specified as HW and dimensionally manufactured to ID/OD.

