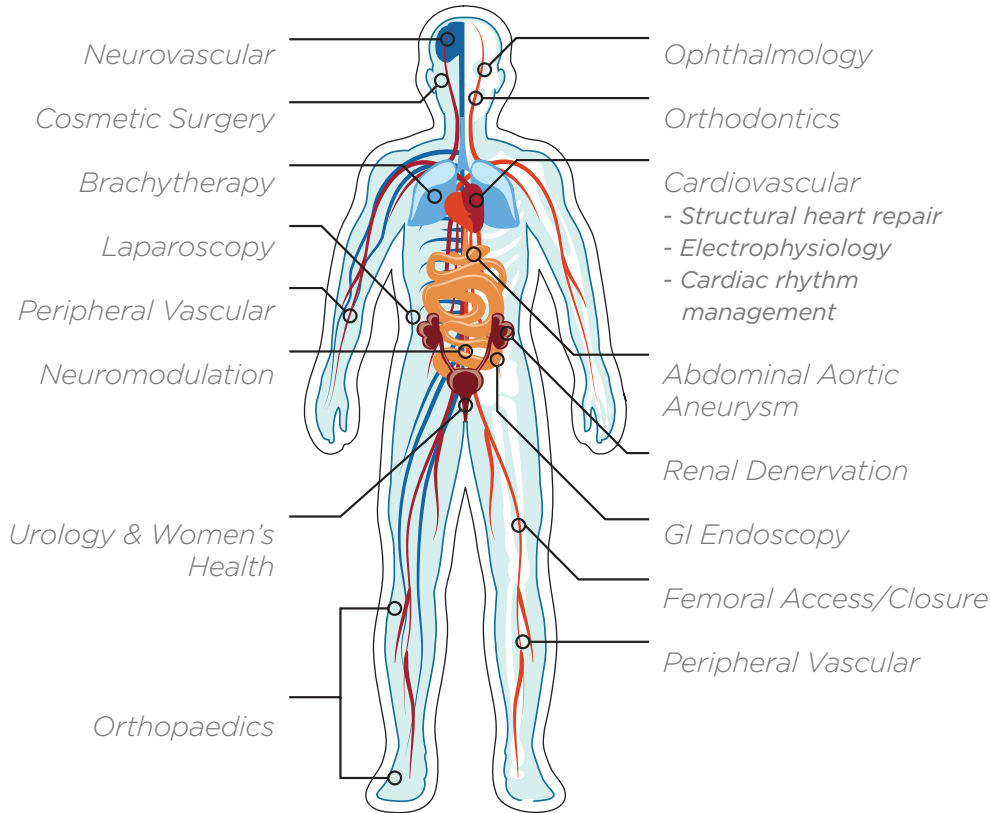


# Medical Line Card

Cardio | CRM | Structural Heart | Neuro | Peripheral | GI/ENDO

## MEDICAL MARKETS: *Vascular & Non-vascular*



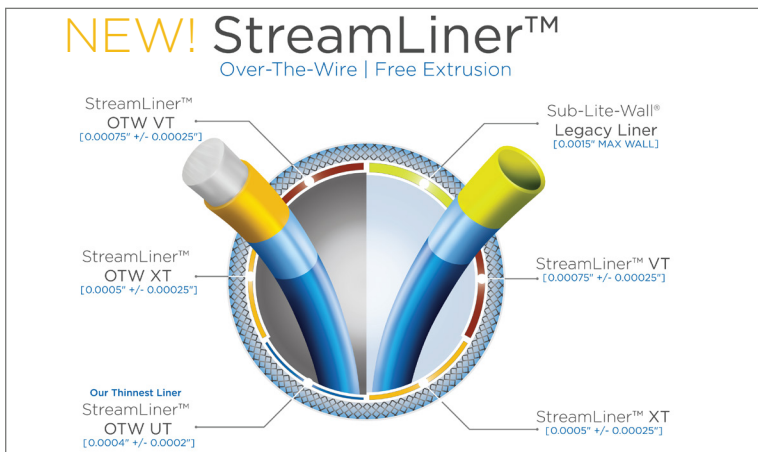
## ZEUS OFFERINGS

### *Experience Matters*

From material selection to custom polymer solutions, Zeus extrusion technologies get you where you need to be within the body.

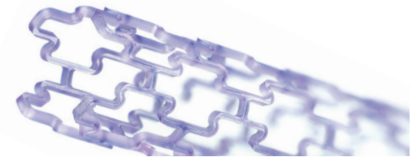
- **FEP:** Fluorinated Ethylene Propylene
- **PTFE:** Polytetrafluoroethylene
- **PEEK:** Polyetheretherketone
- **FluoroPEELZ®:** Peelable Heat Shrink
- **ETFE:** Ethylene Tetrafluoroethylene
- **PVDF:** Polyvinylidene Fluoride
- **PFA:** Perfluoroalkoxy
- **ECTFE:** Ethylene Chlorotrifluoroethylene
- **PI:** Polyimide
- **PI Glide™:** Lubricous Polyimide
- **Tie Layer:** Liner-to-jacket Adhesive Layer
- **LCP:** Liquid Crystal Polymer
- **Absorv™:** Bioabsorbables
- **Bioweb™:** Electrospun Nonwovens
- **Aeos™ ePTFE:** Electrospun PTFE
- **Nylon 11, 12, Pebax®:** Thermoplastic Polyamides

## CATHETER COMPONENTRY



- Fusing Sleeves
- Catheter Liners
- Jacketing Materials
- Non-metallic Braiding Materials
- Wire Guide Coverings
- Balloon & Stent Protectors
- Introducer Sheaths
- Multi-lumen Catheter Tubing
- Processing / Support Mandrels
- Customized Tubing
- R&D Support
- Prototype Sampling Program

## EMERGING PRODUCTS



### **Absorv®**

- Finite Functionality
- Tailored/Customized Absorption Profiles



### **BIOWEB™**

- Mimics the Natural Extracellular Matrix (ECM)
- Novel Stent Encapsulation Technology



### **Aeos® ePTFE**

- Microporous Structure that Promotes Cellular In-growth
- Highly Customized IND, Density, and Pore Size for Selective Permeability

